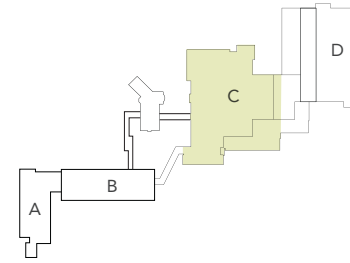


# C BUILDING - LEVEL 200

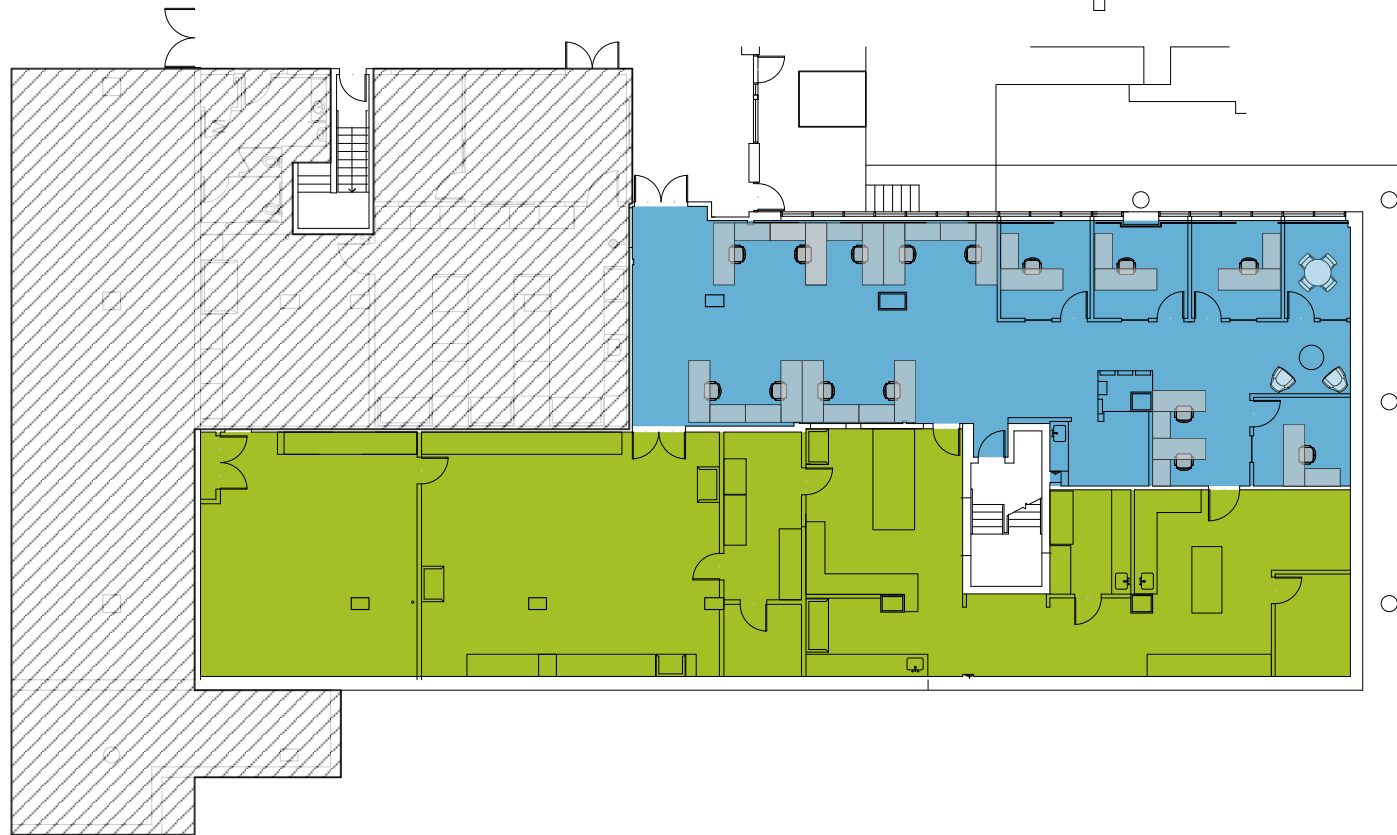
7,115 RSF

CAMPUS MAP



## KEY

- LAB
- OFFICE



# LAB SPECIFICATIONS

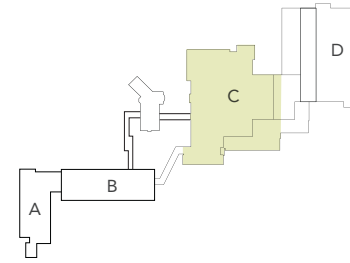
## C BUILDING: LEVEL 200

Square Footage:	7,115 RSF
Office/Lab Ratio:	40% Office / 60% Lab
Offices:	Private offices and open office space
Kitchenette:	(1) kitchenette
Hoods:	(4) 4-ft. fume hoods
HVAC Systems:	Shared AHU serving Lab and Office area
Plumbing:	The lab spaces are serviced by domestic hot and cold water and non-potable hot and cold water systems. (2) Lab sinks tied into dedicated neutralization system. (1) lab sink with an under-counter chip tank. Shower & Eye wash stations in lab.
Electrical:	(1) 225amp, 480/377v, 3 phase, 4 wire panel.
Emergency Backup:	15kW dedicated Generator
Lab Equipment:	Cold room

# C BUILDING - LEVEL 200

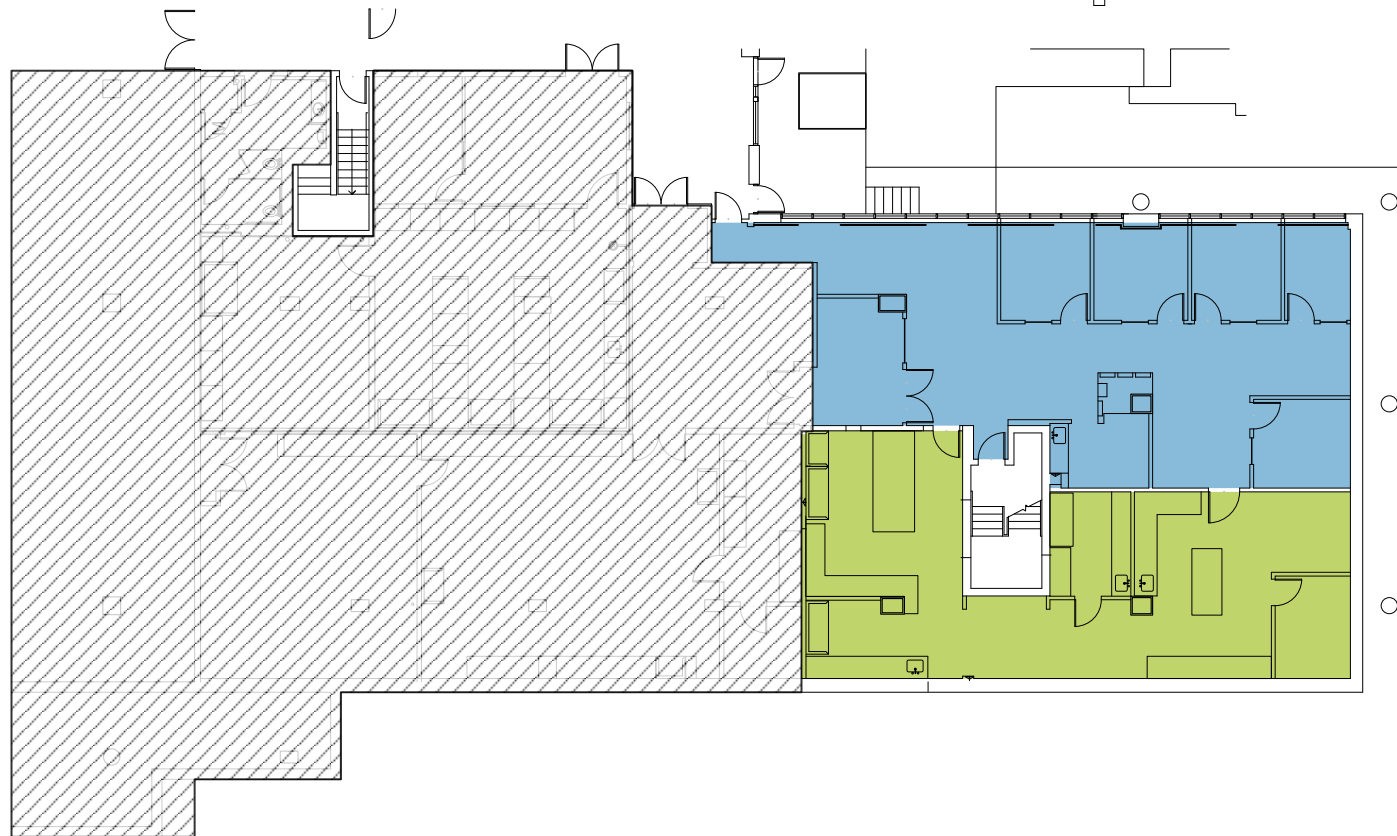
4,088 RSF

CAMPUS MAP



## KEY

- LAB
- OFFICE



# LAB SPECIFICATIONS

## C BUILDING: LEVEL 200

Square Footage:	4,088 RSF
Office/Lab Ratio:	50% Office / 50% Lab
Offices:	Private office spaces and open office areas
Kitchenette:	(1) kitchenette
Hoods:	(2) 4-ft fume hoods
HVAC Systems:	Shared AHU serving lab and office area
Plumbing:	The lab spaces are served by domestic hot and cold water and non-potable hot and cold water systems. (2) Lab sinks tied into dedicated neutralization system. Shower & Eye wash stations in lab.
Electrical:	The space is served by (1) 225amp, 480/377v, 3 phase, 4 wire panel.
Emergency Backup:	15kW dedicated Generator
Lab Equipment:	Cold Room

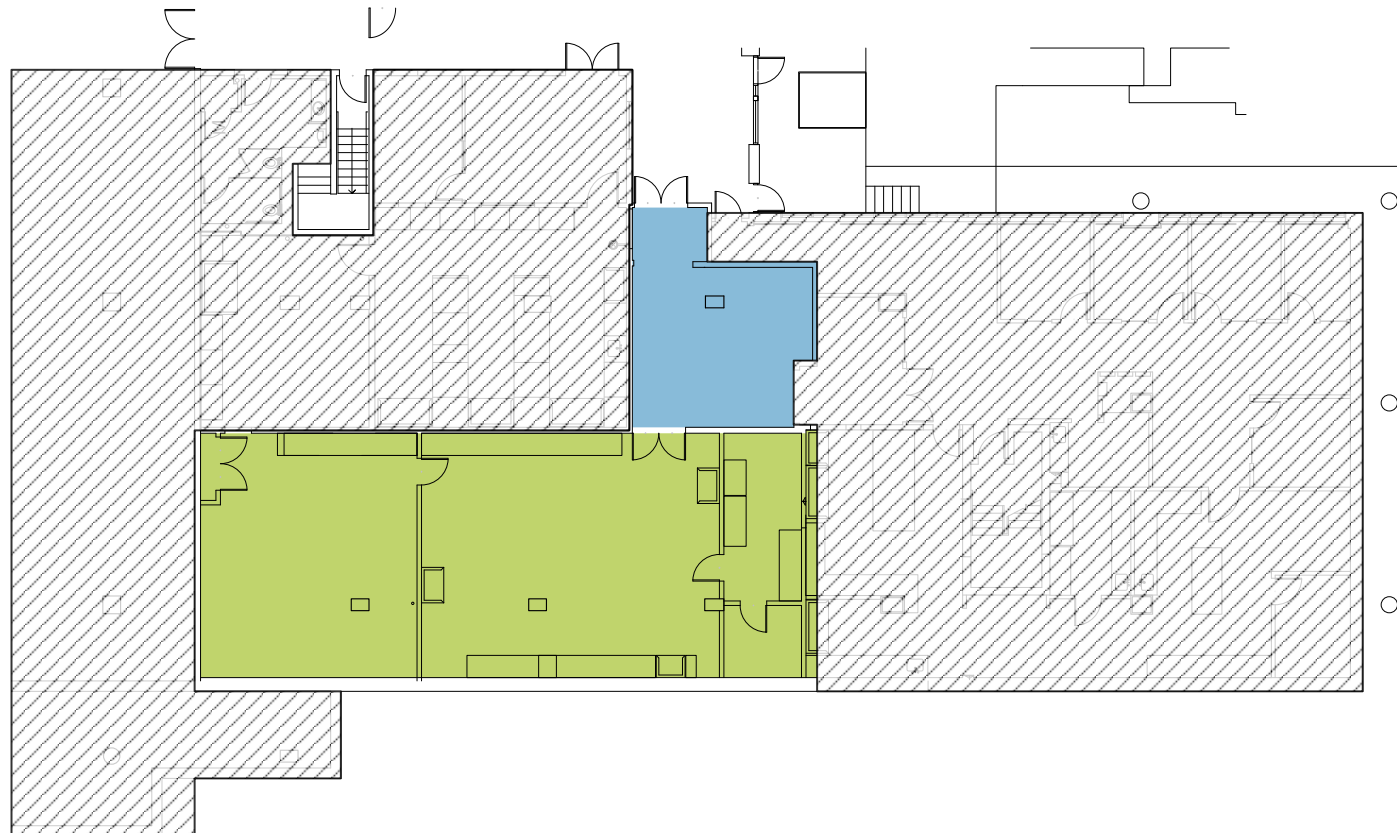
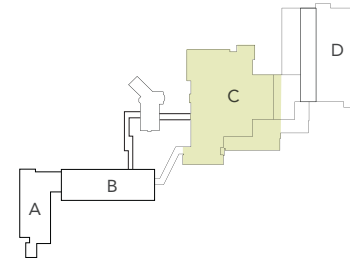
# C BUILDING - LEVEL 200

3,027 RSF

## KEY

- LAB
- OFFICE

CAMPUS MAP



# LAB SPECIFICATIONS

## C BUILDING: LEVEL 200

<b>Square Footage:</b>	3,027 RSF
<b>Office/Lab Ratio:</b>	20% Office / 80% Lab
<b>Offices:</b>	Private office spaces and open office spaces
<b>Conference Room:</b>	(0)
<b>Hoods:</b>	(2) 4-ft fume hoods
<b>HVAC Systems:</b>	Shared AHU serving lab and office area
<b>Plumbing:</b>	The lab spaces are serviced by domestic hot and cold water and non-potable hot and cold water systems. (1) lab sink with an under-counter chip tank. Shower & Eye wash stations in lab.
<b>Electrical:</b>	The space is served by one (1) 225 Amp, 120/208V, 3 phase, 4 wire panel and one (1) 100 Amp, 120/208V, 3 phase, 4 wire panel.
<b>Emergency Backup:</b>	None